

DaTE

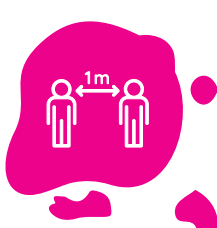
FEEL SAFE DURING YOUR VISIT



FACE MASKS ARE
REQUIRED



USE THE ALCOHOLIC
HAND SANITIZER GELS
TO DISINFECT YOUR
HANDS



PLEASE MAINTAIN A
1 METRE DISTANCE
FROM OTHERS



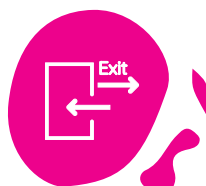
AVOID HUGS AND
HANDSHAKES



WASH AND SANITIZE
YOUR HANDS OFTEN



COVER YOUR
MOUTH AND NOSE
IF YOU SNEEZE
OR COUGH



PLEASE PAY ATTENTION
TO SEPARATE FLOWS
TO ENTER AND EXIT
THE EXHIBITION



USE DIGITAL
PASSES, THEY
ARE SAFER!



ALL AREAS ARE
CLEAN AND
SANITIZED

DaTE is preparing an event where visitors can view the new eyewear collections in person, while in perfect compliance with **Italian regulations regarding the Covid-19 virus**. Below are the rules for access to the event, drawn up according to the latest **recommendations from health authorities**. We remind you that, in the interests of everyone's safety, it is compulsory to **wear a protective face mask** inside the Stazione Leopolda exhibition area. The organisers of DaTE undertake to integrate and make known any further and/or changes to rules that may be issued at a later date.

ENTRANCE BADGE

To participate in the event as a visitor, you must pre-register on the website www.dateyewear.com/en/visitatori/ indicating the days on which you intend to attend the fair (subject to availability). Access to the event is allowed only to holders of digital badges, and only on the day(s) selected in the registration stage. DaTE advises you to organise your visit in advance, making an appointment with the exhibitors you intend to visit and contacting them directly before the event www.dateyewear.com/en/exhibitors/.

VISITOR FLOW MANAGEMENT

In order to avoid large groups or crowds, DaTE has set up a one-way visit route with a separate entrance and exit. It is therefore important that visitors follow the instructions, always using the entrance door to enter and the exit door to leave or for short trips to the outdoor area (e.g. to make a phone call, have a coffee, etc.).

ENTRANCE TO DaTE

The current social distancing policy allows for approximately 1,200 visitors per day; thus, it is important to select your intended dates in advance. Your assistance is essential in order to streamline the entrance process. To this end, we recommend that you keep your badge within easy reach - this can be displayed via digital means (smartphone, tablet) - and that you wear your face mask, the use of which will be mandatory inside the Stazione Leopolda exhibition area.

ACCESS TO THE STANDS

As usual, visitors will be able to visit exhibitors' stands to see the new collections in person. Visits will be carried out wearing a face mask and hands must be disinfected beforehand. The collections can be viewed in complete serenity after carefully disinfecting hands with sanitising gel, thereby retaining the important tactile aspect of the experience. Similarly, all exhibitors will ensure that their products are sanitised between visitors.

SERVICES

All services necessary for normal running of the event will be guaranteed. Cloakrooms will operate normally; clothing and personal items will be stored in special garment bags. Information materials may be made available in digital format or, in the case of printed materials, will be available to visitors in self-service mode.

CATERING

A catering area is accessible, where it is possible to buy food and drink. Food will be prepared or completed on-site, compliant with health and safety guidelines, and will be packaged for serving in lunch boxes or individual packs. A special lounge area has been set up for consumption of food and drink, in compliance with current regulations.

CLEANING AND HYGIENE

Cleaning practices will be amplified. Frequent cleaning and disinfection will be guaranteed on all high-touch surfaces, with disinfectant gel dispensers at different points along the exhibition route.

